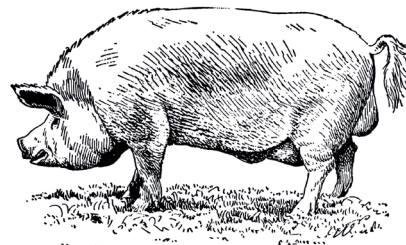




APPLETON'S

Est 1867



CHRISTMAS ORDER FORM 2015

Customer Surname Initial

Daytime Phone Number

Collection Day (Please Circle) Mon 21st / Tue 22nd / Wed 23rd / Thurs 24th	Order Taken By:
Collection Point (Please Tick your Appleton's Shop): Wetherby <input type="checkbox"/> Ripon <input type="checkbox"/>	

		Price (£)	Quantity	Comments
Pork Pies	Pound Pie	£4.20 ea		
	Pound Pie with Cranberry Top	£4.75 ea		
	Pound Pie with Apple Top	£4.75 ea		
	Flat Lattice	£10.89/Kg		
	Large Lattice	£10.89/Kg		
	Long Ham & Egg	£10.89/Kg		
	Long All Meat	£10.89/Kg		
	Extra Large Pie	£10.89/Kg		
Ham	1/2 Roast	£15.99/Kg		
	Whole Roast	£15.99/Kg		
	Bone -In Ham	£12.99/Kg		
	Honey Glazed Corner	£12.99/Kg		
Hampers	Appleton's Luxury Hamper	£75.00		
	Appleton's Taste of Christmas	£25.00		
Other	Rolled Loin of Pork	£7.99/Kg		
	Raw Gammon Joint	£7.49/Kg		

Please note that we're not taking orders for small pies, sliced ham, bacon, sausages, sausage meat and stuffing however we will have plenty for you to collect on the day.



APPLETON'S Christmas 2015



On behalf of all the staff at Appleton's we'd like to take this opportunity to thank you for your custom and wish you a very Happy Christmas!

Collection Point (Please Tick your Appleton's Shop):

Wetherby **Ripon**

Collection Day (Please Circle):

Mon 21st / Tue 22nd / Wed 23rd / Thurs 24th

N.B. Please note orders must be collected by 12noon on your collection day

Name on Order:.....

Pie Only Order:.....

Please give at least 48hrs notice for any changes to your order.

Ripon: Tel: 01765 603198

Wetherby: Tel:01937 587558

Email: info@appletonsbutchers.co.uk